

Release Notes – November 2018

Feature Enhancements

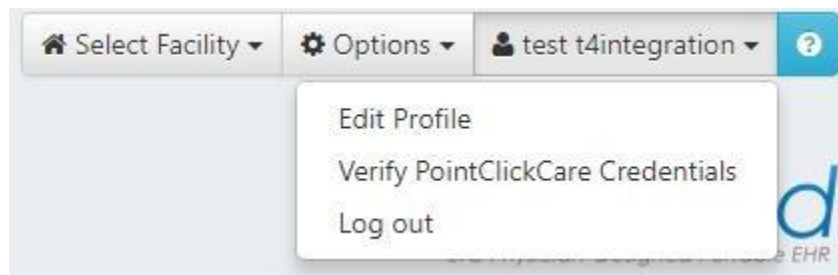
PointClickCare Integration

GEHRIMED now offers an integration with PointClickCare that enables you to import patient information from a PointClickCare facility to GEHRIMED.

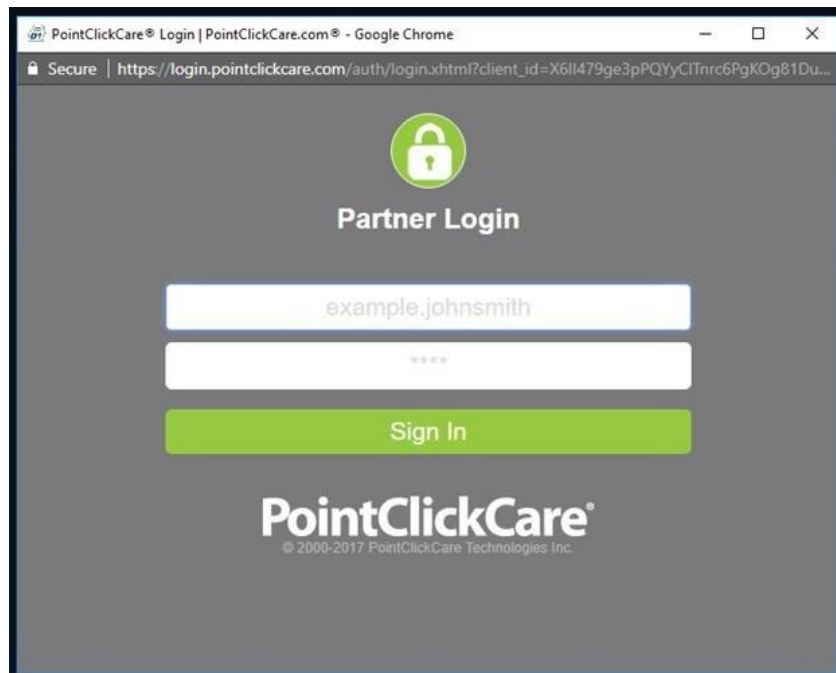
To setup your PointClickCare integration, you will need to contact your GEHRIMED Client Support before performing the following setup.

To perform account setup:

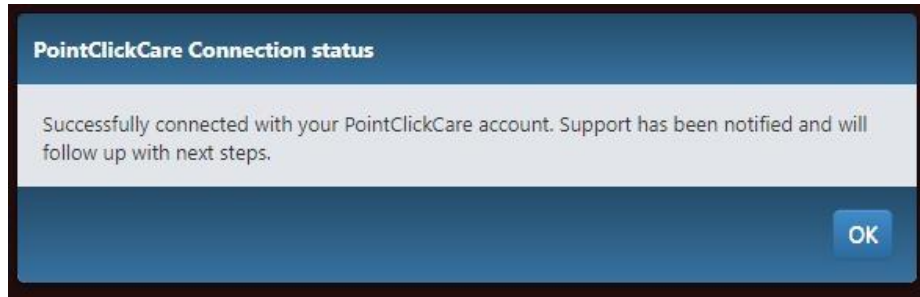
1. Login to your GEHRIMED Account and select the **Verify PCC Credentials** option:’



2. Use your PointClickCare account credentials on the Partner Login window:



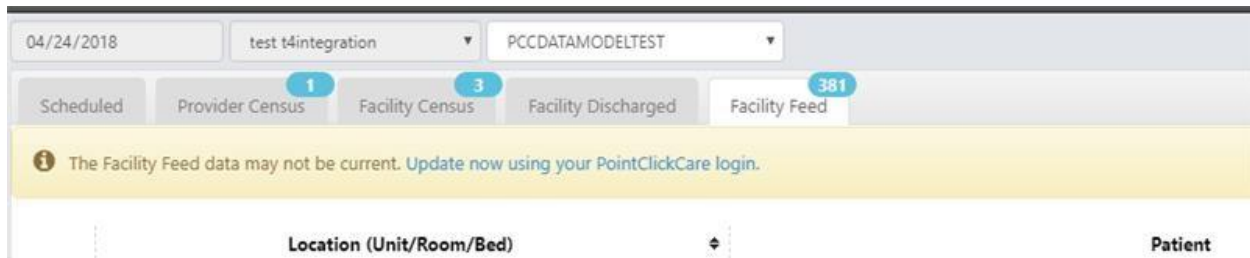
3. After successfully entering your credentials a message is displayed. GEHRIMED Client Support will perform the necessary database setup for your account:



4. Once contacted by GEHRIMED, perform steps 1 and 2 again to complete your account setup.

Using the PCC Integration

Once your PCC account setup is complete the functionality is mostly identical to the current [GEHRIMED Facility Feed](#), however; due to the nature of our integration with PointClickCare you will occasionally need to reenter your PointClickCare credentials.



When the above message is displayed, select the link to launch the PointClickCare Partner Login window.

~end of document~